

FarmCollect
M&E Package

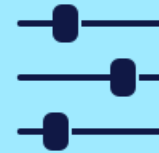
Background

Our M&E package is born out of experience and necessity.

10 years of experience implementing M&E strategies has led us to design a workflow and tool that is (go to [Elements of the Offer](#)):



Effective



Dynamic



Easy to use



**Grounded
in M&E best
practices**

It was a necessity for us to take away the frustrations that Traditional M&E caused us.

Frustrations like:



Complications



**Unshared and untransferable
Knowledge**



Cost-sensitivity

About Us



Resilience is an international network organization that carries out research and consultancy projects for its clients in emerging markets. We are a diverse group of bright and open-minded professionals seeking to make a change. Currently, we are mostly active in agribusiness, horticulture and seed-sector development, farmer-led irrigation and drinking water.



Agramondis is a consultancy specializing in agricultural industry, agricultural finance, development and field research. With a focus on Africa, the company's experts support projects from cultivation advice through agriculture to project development, project implementation and project monitoring and evaluation.

Part 1

Our M&E Offer



What we are offering



A Comprehensive, Streamlined and Cost-effective process for designing, implementing and evaluating projects.



Elements of the Offer



Design of effective Theories of Change, Log frames and M&E indicators.

An effective M&E starts with choosing the right and necessary indicators and then designing the Log Frame accordingly.

That is what our offer starts with.

Elements of the Offer



Field data collection strategies

Our package comes with developing sampling strategies, testing survey designs and gathering and cleaning data.

We found that knowing what data to collect, how best to collect it and knowing what to do with the data is a critical part of M&E.

Elements of the Offer



FarmCollect.io, our cloud-based, versatile M&E tool.

An easy-access tool with real-time access to project performance reports on a mouse-click



Elements of the Offer



Project evaluations and performance reviews.

Our offer covers all your M&E needs from start-to-finish, so baseline, mid-term and final evaluations are a core part of our package.

What makes our offer unique?

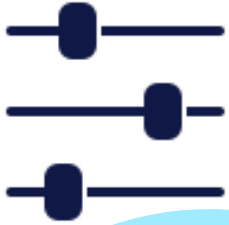


Easy access tool to monitor project

M&E activities can be easily executed, and survey results easily exported as csv. Not a paper-based tool.



What makes our offer unique?



Versatile

Our M&E product easily adjusts to fit your needs, rather than forcing your project into a set M&E framework.

What makes our offer unique?



Time saving

For quick survey design, executing M&E activities,
and easy reporting.



What makes our offer unique?



Practical tool

Well-researched, continuously tested and refined to identify similarities amongst project, note differences and transfer these similarities to other similar projects while also preserving the differences.



What makes our offer unique?



Scalable

Harness the power of technology to assess indicators using different variables, and store and retrieve data according to privacy standards.





5. Team

Nelson Marula, AgriTech consultant, Resilience BV



- An M&E data collection and GIS expert skilled in the use of mobile applications of mapping and data collection online, offline or with low quality internet connections
- He also works on the management of IRIPO – a communication platform which delivers agricultural extension services.

Johanna Farrell, CEO, Agramondis



- M&E expert for evaluating supplier risk for JDE Common Grounds program globally
- Responsible for designing and building a dashboard for reporting Nescafé Plan Monitoring & Evaluation data from 10+ countries. SAP Cloud Analytics was used to manage the database and reporting



Jelle van den Akker, AgriTech consultant, Resilience BV

- Worked on monitoring and evaluation data collection and reporting on several projects in east Africa and India
- Developed SmartFarming a agronomy expert tool that also collects data for M&E and certification purposes
- Responsible for analysing M&E data as part of the implementation of a large scale farmer led irrigation project in Mozambique.

Nurein Akindele, M&E Data Analyst



- Monitoring and Evaluation expert at Agramondis, grounded in the United Nations Food and Agriculture Organization's (FAO) M&E principles
- M&E Data analyst.





Next step



Call us on: +234 706 530 5009



Email us at:
info@agramondis.com
info@resiliencebv.com



Our Offices are at: 2, Opeyemisi
Bamidele, off Freedom Way,
Lekki Phase 1, Lagos, Nigeria.



Dreijenlaan 2, 6703 HA;
Wageningen, Netherlands.

Thanks!

Do you have any questions?

Email Jelle van den Akker at:

jelle@resiliencebv.com

Or Johanna Farrell at:

johanna.farrell@agramondis.com



Reference Projects

Sustainability Assessment

COLEACP, African, Caribbean and Pacific countries **(2018 – 2020)**

- Developed a sustainability charter and linked sustainability assessment for horticultural producers and traders.
- Operationalised their Fit4Market training programme for the African, Caribbean and Pacific traders.
- The results of the annual sustainability assessment formed the basis of COLEACP's reporting to the EU and other donors

M&E Development

BinBang **(2018-2019)**

- Created an internal Monitoring & Evaluation system, including theory of change strategy, data collection process and KPI reporting.
- Developed the business case of a new circular economy concept

M&E Reporting System

Nescafé Plan **(2018)**

- Responsible for designing and building a dashboard for reporting Monitoring & Evaluation data from 10+ countries
- SAP Cloud Analytics was used to manage the database and for reporting

Reference Projects

Farm Sustainability Assessment (FSA)

SAI Platform (2015)

- Researched, developed and aligned FSA's monitoring metrics with other food industry initiatives, which included The Sustainability Consortium (TSC), the Cool Farm Tool and Field to Market's Fieldprint Calculator
- Prepared and facilitated the technical aspects of SAI metrics working group meetings; extracting learning, conclusions and recommendations for a metrics strategy.

Theory of Change (ToC)/Impact Assessment

CottonConnect (2013)

- Developed a ToC through a workshop with the leadership that needed to 'retrofit' existing values and an existing portfolio of projects
- Reviewed existing normative documents, developed draft impact pathways and goals hierarchy indicators, interviewed internal and external stakeholders
- Planned and facilitated a workshop with senior leadership and external advisors to interactively define the organisation's ToC

Reference Projects

M&E Reporting System Review

CottonConnect (2012 – 2013)

- Evaluated the cost-benefit ratio of the field data gathering protocols for 200,000+ cotton farmers in India and China
- Advised on sampling regimes and developed a new role and responsibilities of M&E director

M&E Indicator Framework

Unilever (2012)

- Developed a simple impact logic and a M&E indicator framework for Unilever's global smallholder engagement programme, together with Sustainable Food Lab and Oxfam
- Overcame the challenges of scalability to 500,000+ smallholders worldwide by developing an affordable and scientifically valid process

M&E Expert/Data Analysis

Demonstrating and Improving Poverty Impacts Project (DIPI)

- Led the M&E exercise which spanned across global trends in seven agricultural commodities (coffee, cocoa, tea, bananas, cotton, sugarcane and palm oil) and across seven certification schemes
- Responsible for database cleaning, analysis, data visualization (using Tableau) and completion of three written reports on geographic trends, smallholder reach and multiple certifications

Part 2

Our tool, FarmCollect
in details

FarmCollect process



1. Advice



The FarmCollect team advises on survey design and data collection using open-source options (like Mwater) suited to your local circumstances



2. Platform



The FarmCollect platform is set up to meet your wishes and project



3. Registration



Users can register performed trainings and activities + users can register survey outcomes linked to corresponding proof e.g a pdf of map or interview



4. Assessments



Users can export data per indicator/activity this can be done using our 3d table combining data with multiple variables e.g. per goal, age group, gender, project role and so on



5. Support



Throughout the process our team of data and development experts is supporting the workflow on and off the field



1. Advice

...

- ✓ Our consultancy services support workflow optimization such that entry of data can be optimized at field office level
- ✓ Our (Portuguese speaking) project staff is ready to help

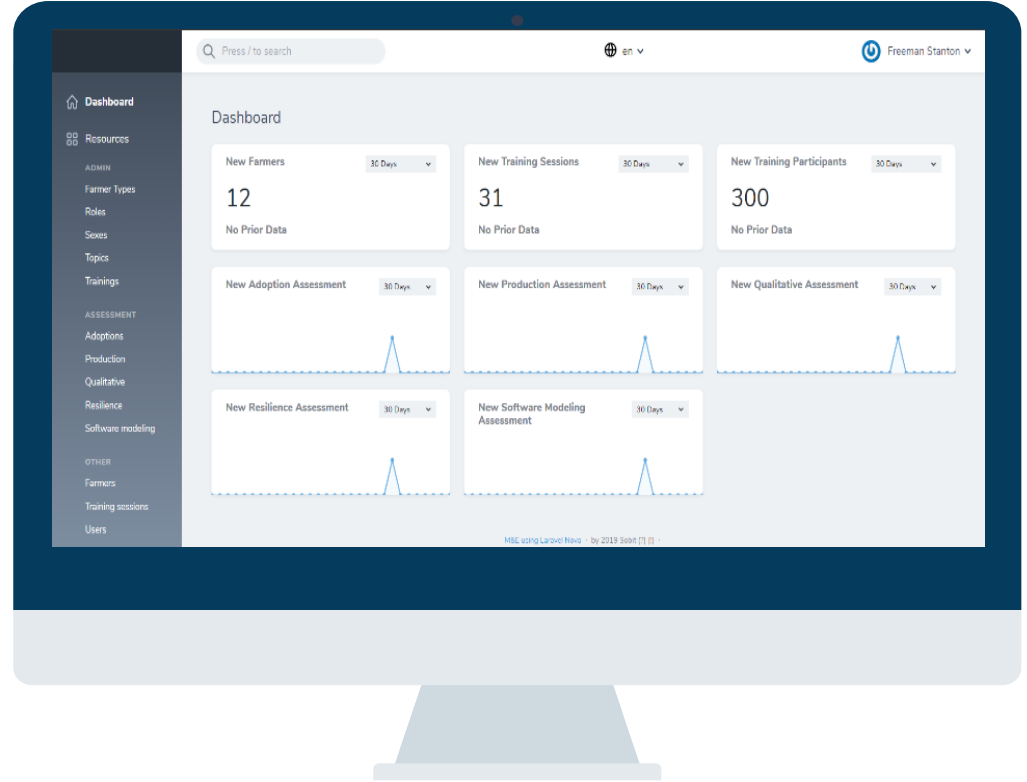




2. Platform

FarmCollect.io

- ✓ *Registration of farmer profiles*
- ✓ *Registration of trainings*
- ✓ *Registration of survey results*



2. Platform features

- ✓ The tool includes tables on beneficiaries, trainings and several assessments
- ✓ The tool is cloud based, web application with two user types admin & user
- ✓ The tool generates output in a clear error-free excel format
- ✓ We guarantee automatic backups & world leading data security
- ✓ The tool registers training activities and links them to M&E indicators
- ✓ Our tool will save our staff an estimated 20% of their time



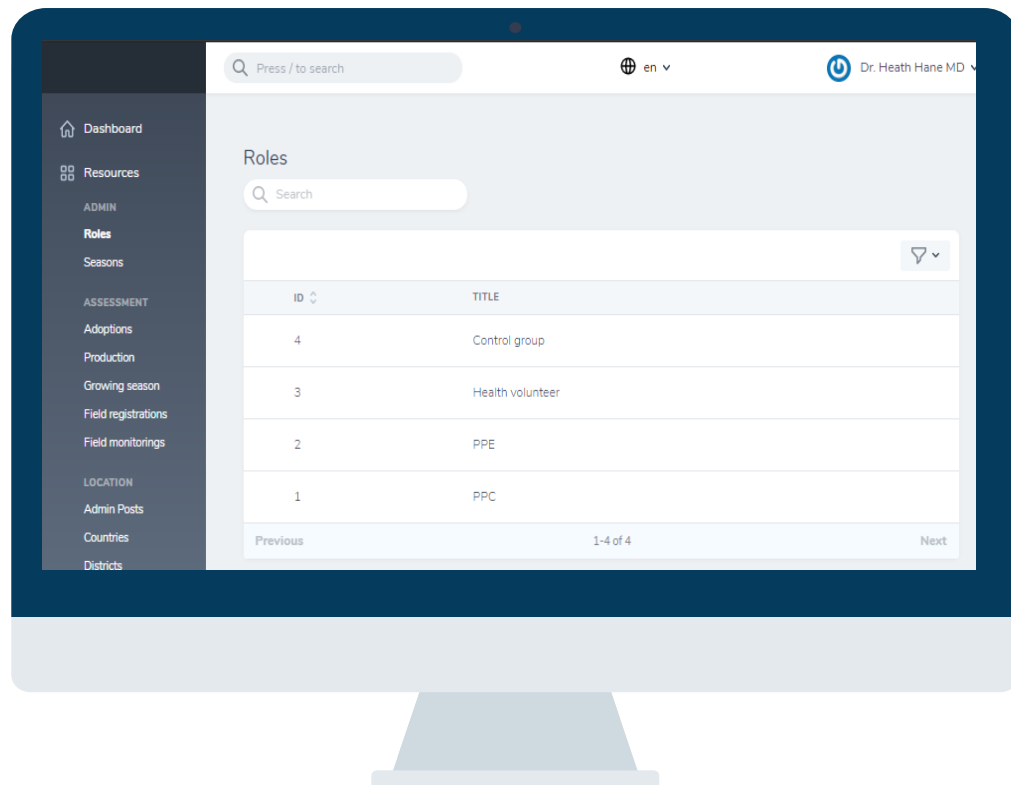


2. Platform

...

Admin profile

- ✓ The admin Determines the “structure” he/she edits and installs the indicators, topics, roles of clients, names of activities





3. Registration

...

Beneficiaries overview

- ✓ The users can register clients incl. variables like gender, location, project role etc.
- ✓ Clients can be linked to project activities and surveys

The image shows a computer monitor displaying a web form titled "Create Client". The form contains the following fields and options:

- Name: Text input field with a red asterisk and a clear button.
- Phone: Text input field with a red asterisk.
- Identification code: Text input field containing "BA-CA-IND-01-01".
- Year of birth: Dropdown menu with "Choose an option" and a downward arrow.
- Sex: Radio buttons for "Male", "Female", and "Other".
- Role: Radio buttons for "PPC", "PPE", "Health volunteer", and "Control group".
- Country: Text input field with "Country" as a placeholder.
- District: Text input field with "District" as a placeholder.
- Admin Post: Text input field with "Admin Post" as a placeholder.
- Locality: Text input field with "Locality" as a placeholder.

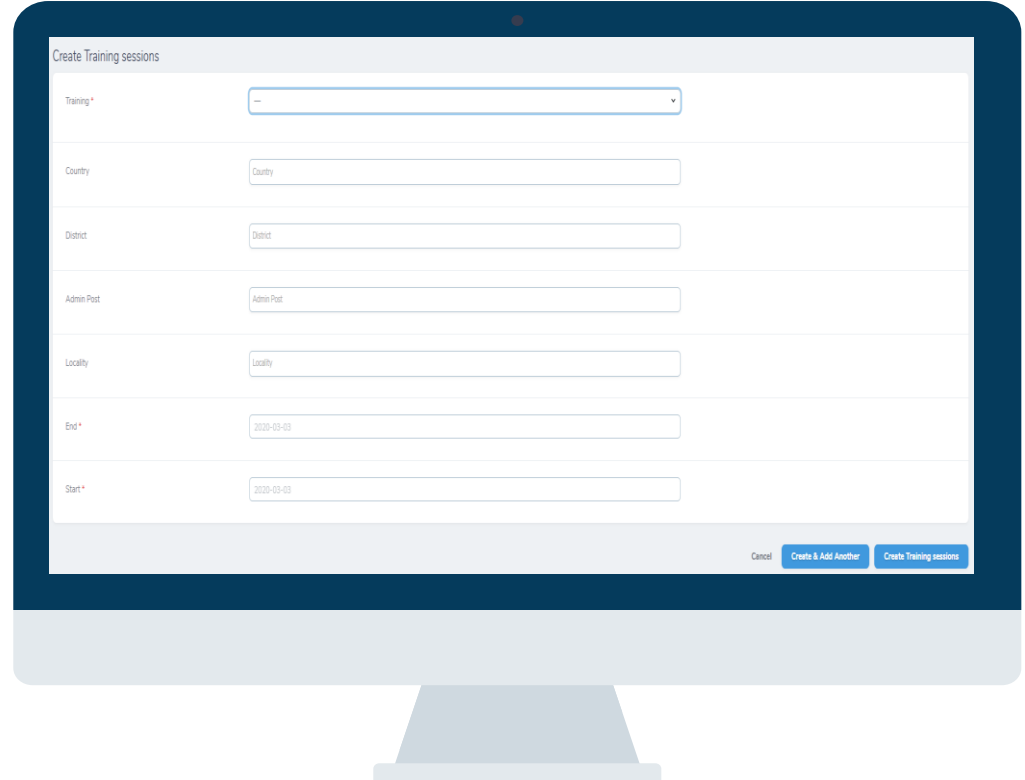


3. Registration

...

Registration of project activities

- ✓ The users can register performed trainings and activities (Incl. directly linking attendance to individual clients)



The screenshot shows a web application interface for creating training sessions. The form is titled 'Create Training sessions' and contains the following fields:

- Training***: A dropdown menu with a downward arrow.
- Country**: A text input field with the placeholder text 'Country'.
- District**: A text input field with the placeholder text 'District'.
- Admin Post**: A text input field with the placeholder text 'Admin Post'.
- Locality**: A text input field with the placeholder text 'Locality'.
- End***: A date input field containing the value '2020-03-03'.
- Start***: A date input field containing the value '2020-03-03'.

At the bottom right of the form, there are three buttons: 'Cancel', 'Create & Add Another', and 'Create Training sessions'.

3. Registration

...

Survey outcomes

- ✓ Save survey results directly linked to indicators
- ✓ Link results to corresponding proof e.g a pdf of interview.

Create Adoption

Client *

Season *

Client with improved irrigation practices

Access to market information

Access to improved inputs

Improved food intake

Improved access to appropriate food

Increased productivity

Farmers with increased income

Farmers with improved access to input-output markets

People whose nutritional situation became more resilient

ID	CLIENT	SEASON	CLIENT WITH IMPROVED IRRIGATION PRACTICES	ACCESS TO MARKET INFORMATION	ACCESS TO IMPROVED INPUTS	IMPROVED FOOD INTAKE	IMPROVED ACCESS TO APPROPRIATE FOOD	INCREASED PRODUCTIVITY	FARMERS WITH INCREASED INCOME	FARMERS WITH IMPROVED ACCESS TO INPUT-OUTPUT MARKETS	PEOPLE WHOSE NUTRITIONAL SITUATION BECAME MORE RESILIENT	FARMERS WITH IMPROVED RESILIENCE IN FARMING SYSTEM	IMPROVED NUTRITION AND HYGIENIC PRACTICES
<input type="checkbox"/>	<input type="checkbox"/>	1	martin folverts	Irigation 2020	🟢	🟢	🟢	🔴	🔴	🟢	🔴	🔴	🟢

Previous 1-1 of 1

✓ Easy overview per indicator

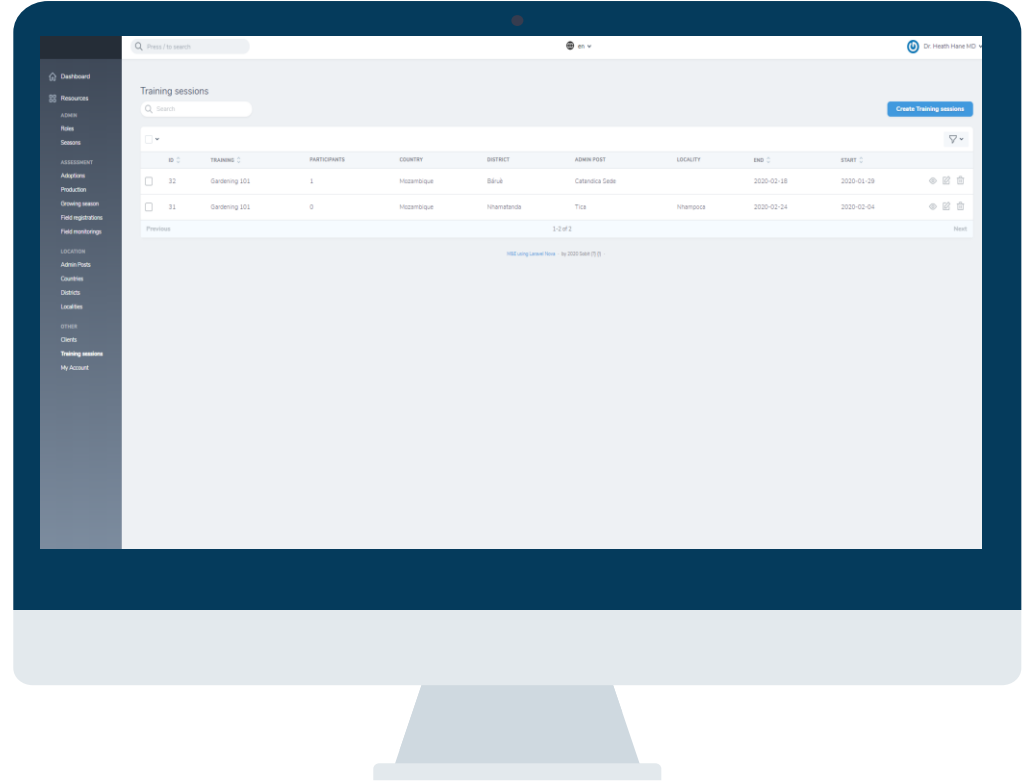


4. Assessments

...

Overview of project activities

- ✓ View attendance, topics locations and more about performed trainings and activities.





4. Assessments

...

Error-free Excel files

- ✓ Perform assessments and export data per indicator, per activity this can be done using our 3d table combining data with multiple variables e.g. per goal, age group, gender, project role and so on.

